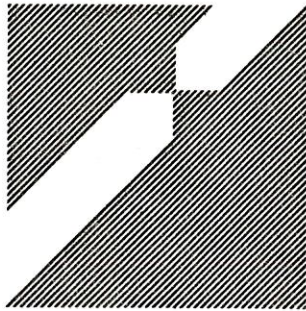


046B

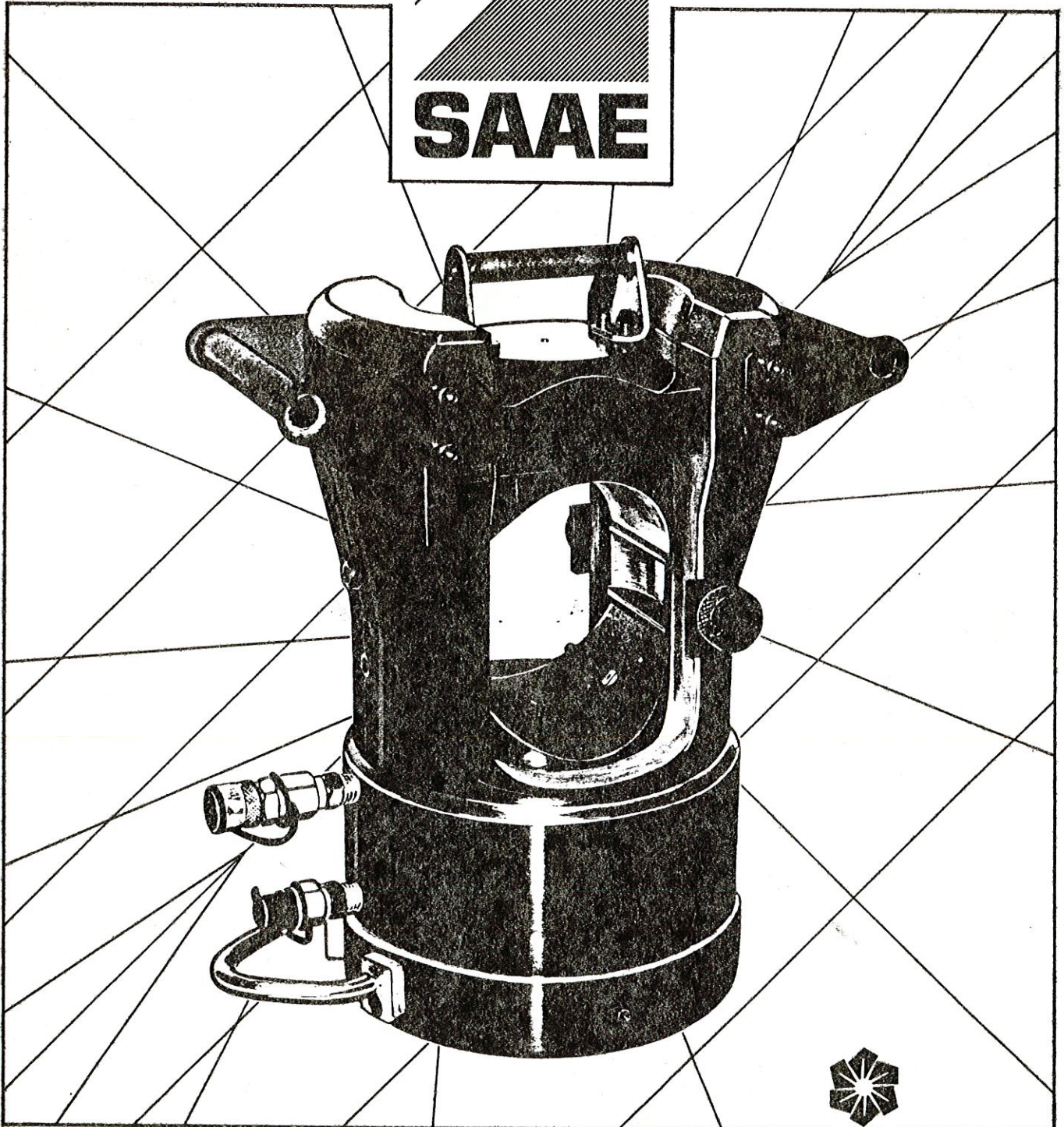


# PRESSE HYDRAULIQUE 2000 KN. WH 2000

2000 KN HYDRAULIC COMPRESSOR REMOTE-POWER OPERATED

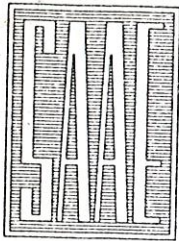


**SAAE**

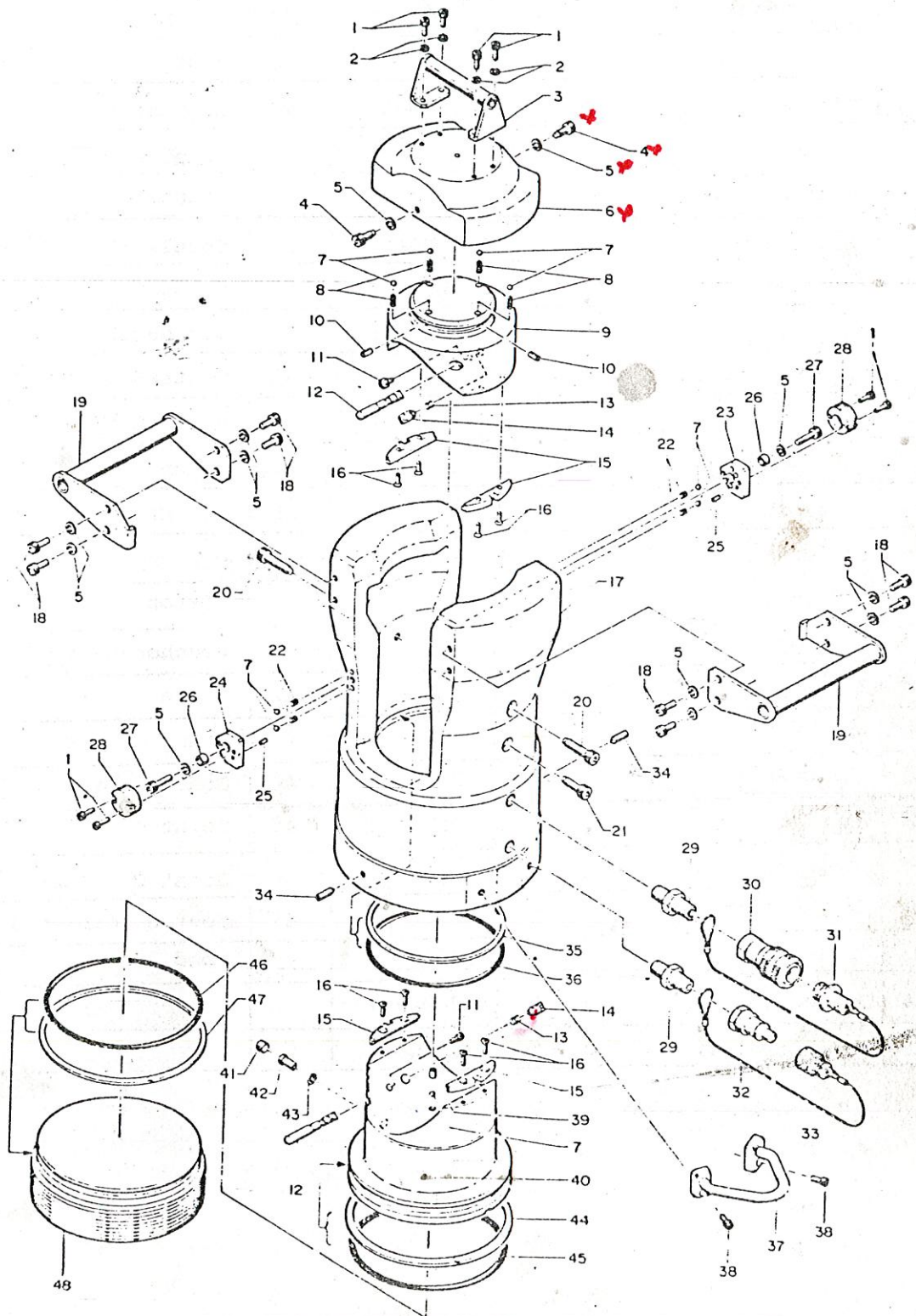


GRUPE  
**CIGIE**





# PRESSE WH 2000



S  
A  
E

WH 2000

PIECE N°	DESIGNATION	QTE	CODE	PIECE N°	DESIGNATION	QTE	CODE
1	Vis M5x5	8	200W-01	26	Manchon	2	200W-19
2	Rondelle M5	4	40A-02	27	Vis M8x25	2	200W-20
3	Poignée	1	200W-02	28	Bouton	2	200W-21
4	Vis M8x20	2	100W-10	29	Adaptateur	2	100W-23
5	Rondelle M8	12	40-25	30	Coupleur à bille fem.	1	100W-24
6	Chapeau	1	200W-03	31	Bouchon de coupleur	1	100W-26
7	Bille 1/4"	9	26-22	32	Coupleur à bille mâle	1	100W-24
8	Ressort (70)	4	200W-04	33	Bouchon de coupleur	1	100W-27
9	Support de matrice	1	200W-05	34	Vis M8x22	1	200W-24
10	Goupille 6x12	2	40U-34	35	Contre-joint P 150	1	200W-25
11	Bouton	2	200W-06	36	Joint O P 150	1	200W-26
12	Axe	2	200W-07	37	Poignée	1	200W-27
13	Ressort (42)	2	200W-08	38	Vis M6x12	2	200W-28
14	Clavette	2	200W-09	39	Vis M8x10	1	100W-15
15	Plaquette	4	200W-10	40	Piston	1	200W-29
16	Vis M5x16	8	40U-11	41	Bouchon de valve	1	100W-19
17	Corps	1	200W-11	42	Valve	1	100W-18
18	Vis M8x16	8	200W-12	43	Joint Cuivre (20)	1	100W-17
19	Poignée	2	200W-13	44	Contre-joint P 175	1	200W-30
20	Vis (5)	2	200W-14	45	Joint O P 175	1	200W-31
21	Vis (4)	1	200W-15	46	Joint O G 180	1	200W-32
22	Bille 1/4"	4	26-22	47	Contre-joint G 180	1	200W-33
23	Butée (1)	1	200W-16	48	Fond	1	200W-34
24	Butée (2)	1	200W-17				
25	Goupille 3x10	2	200W-18				